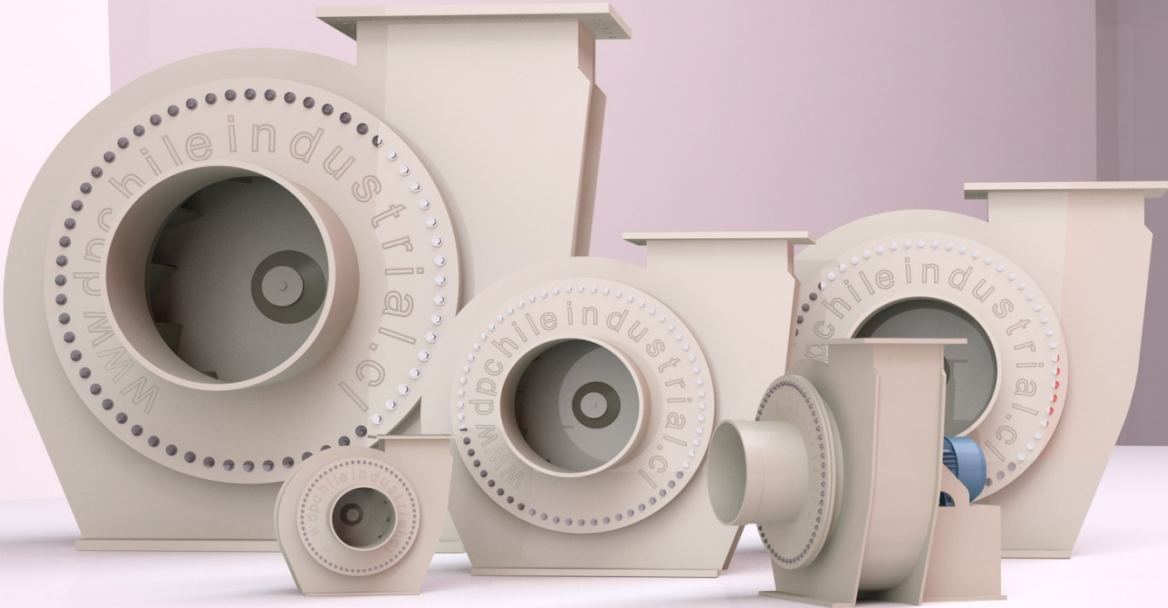
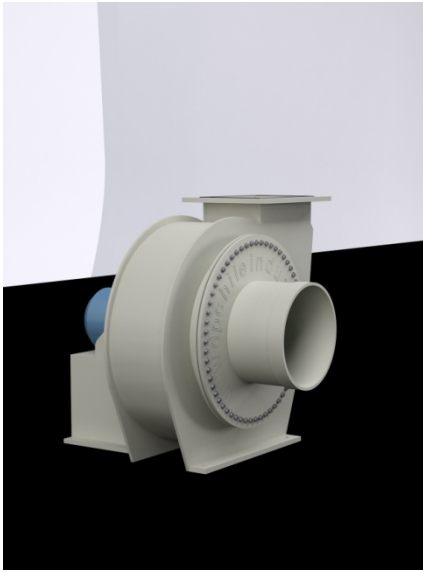


Industrial fans Anti-corrosive





Description

14 models Fans - Extractors made of polypropylene, with flow rates ranging from 450 M3 / hr. until

150 000 M3 / hr.

application

Removing corrosive vapors designed to:

- Chemical plants.
- Petrochemical industry.
- Analytical laboratories.
- Facilities in coastal areas or high humidity
- Gas extraction to 50 ° C

Building

All models are entirely made in **Polypropylene PPH**.

Flanges rectangular output. bolts **316SS**

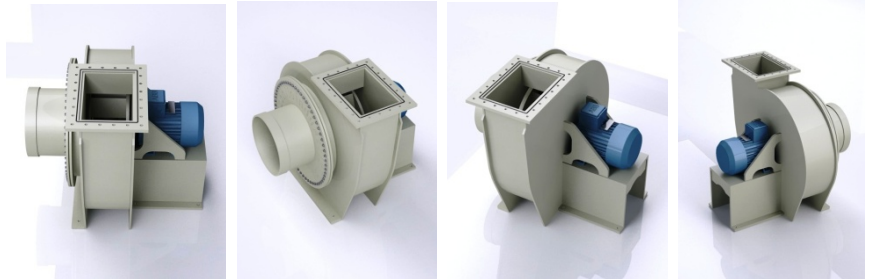
With **engine cover**, to prevent damage, and protect it from corrosion and moisture.

Driving turbine blades curved back, full of polypropylene, with **special system leak-vapor towards the axis acids**

Turbine mass with **Easy Access System**.

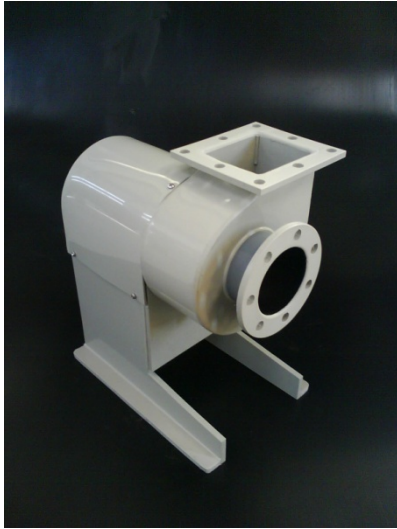
Upon request.

- Versions with adjustable rotating scroll.
- Versions in other plastics
- (PVC, UHMWPE)
- With single phase motor (230 V)
- Explosion-Proof Motor
- Engined DC



Technical data

Model	rpm (turning speed)	kW (motor)	Hp	Voltage	Flow (m3 / hr)	static pressure (mmcda)	Decibels (DB)	Weight (kg)
ECR-150/110	1400	0.18	0.25	380	380	18	60	5.1
ECR-200/125	1400	0.18	0.25			14	55	6.8
ECR-250/160	1400	0.75	1.0		700	18	65	16.3
ECR-300/200	1400	1.1	1.5		1,050	30	68	18.8
ECR-350/250	1400	1.1	1.5	380	2,500	35	70	20.8
ECR-380/250 / B	920	1.5	2.0	380	1600			21.3
ECR-380/250	1400	1.5	2.0	380	2,600	Four. Five	62	21.3
ECR-420/315 / B	920	1.5	2.0	380	3,000	15 25 36 46 55	63 64 60 75 84	21.7
ECR-420/315	1400	1.5	2.0	380	3600	60 67 85	67 84	21.7
ECR-460/315 / B	920	2.2	3.0	380	4000			63.4
ECR-530/380						105	85	
ECR-460/315	1400	2.2	3.0	380	5,800			63.4
	1410	3.0	4.0	380	7500			77.2
ECR-610/450 / B	960	5.5	7.5	380	6,200	45	77	98.2
ECR-610/450	1440	5.5	7.5	380	11,000			98.2



Dpchileindustrial He has found the solution in corrosive environments, incorporating the polypropylene in the structural construction unit



Special system leak-acid vapor towards the axis, prevents destruction of the motor shaft and bearing, keeping the engine in good condition



He engine has a protective cover, To prevent damage, and protect it from corrosion, rain and moisture.



He Polypropylene is one of the polymers of higher resistance to physical and chemical attacks (excellent resistance to aggressive chemical environments)

Mass driving turbine with Special system easily accessible, for quick maintenance and trouble



Polypropylene that is constructed entire unit contains UV protection additive It is increasing the useful life of the equipment in terms of exposure to the outdoors.

DPCHILE
INDUSTRIAL EQUIPMENT

El Porvenir 222 - Plot 25 Hospital
Paine